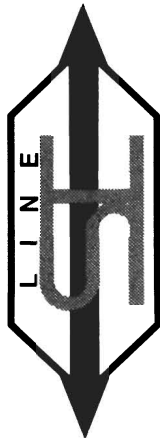


Authorized Line SI dealer



SAFETY

and

INSTRUCTION MANUAL

for

THE LINE SI

BUSHMASTER™ SI

TOURNAMENT MARKING GUN

STANDARD AND DELUXE MODELS

PLACE
STAMP
HERE

LINE SI/SKIRMISH INC.

7117 CANBY AVENUE
RESEDA, CALIFORNIA 91335

READ THE INSTRUCTION WARNINGS
IN THIS MANUAL CAREFULLY BEFORE
USING THIS DEVICE.

WARNING:

THIS IS NOT A TOY. TO BE USED BY ADULTS ONLY. TO BE USED ON I.P.P.A.
SAFETY CERTIFIED FIELDS ONLY. OBEY ALL LOCAL, STATE AND FEDERAL
LAWS. FOLLOW THE RULES OF SAFE PAINTBALL GUN HANDLING. READ
ALL INSTRUCTIONS BEFORE USE.

Line SI/Skirmish, Inc.

7117 Canby Avenue, Reseda, California 91335, U.S.A.
(818) 705-6615

LINE SI/SKIRMISH INC. LIMITED WARRANTY

Line SI/Skirmish Inc. warrants the replacement of any original part due to defect in materials and/or workmanship of this Line SI/Skirmish Inc. airgun. This warranty shall continue in full force and effect for the duration of the original ownership following the date of purchase. Such purchase to be documented by original sales slip or other proof of purchase by such owner.

Line SI/Skirmish Inc. will replace without charge any original part that is determined by Line SI/Skirmish Inc. to be defective under the terms of this warranty. However, shipping charges are not covered hereunder.

Claims under this warranty must be made through an authorized Line SI/Skirmish Inc. airgun dealer who must also install the replacement part. To locate an authorized Line SI dealer, write to: Line SI, 7117 Canby Ave., Reseda, CA 91335. Or call (818) 705-6615.

Failure due to accident, abuse, neglect, normal wear, improper assembly, improper fit, maintenance by other than an authorized Line SI/Skirmish Inc. dealer or use of parts inconsistent with the use originally intended for the airgun as sold, is not covered by this warranty.

There are no other warranties or guarantees expressed or implied made by Line SI/Skirmish Inc. on this airgun. The sole and exclusive liability of Line SI/Skirmish Inc. and/or any of its authorized dealers, affiliates or agents pursuant to this warranty shall be for the repair or replacement of the defective part; incidental or consequential damages are expressly excluded hereunder.

Line SI/Skirmish Inc., its authorized dealers, affiliates or agents shall not be liable under this warranty nor under any state of federal law or the common law or otherwise for any damage or failure, including personal injury, resulting from such use and/or alteration. This warranty gives you specific legal rights, and you may also have other rights which may vary from state to state.

LINE SI/SKIRMISH INC. WARRANTY REGISTRATION

NAME _____ PHONE () _____

ADDRESS _____ CITY _____ STATE _____

DATE OF PURCHASE: _____ / _____ / _____

STORE NAME: _____ CITY _____ STATE _____

LINE SI MODEL _____ COST \$ _____

Reason for choosing Line SI?
(Check all that may apply)

- Line SI's reputation
- Dealer recommendation
- Friend recommendation
- Value
- Other _____

Reason for choosing store of purchase:
(Check all that may apply)

- Most convenient to home or work
- Advertisements
- Best price
- Past experience with that store
- Other _____

What Paintball magazines do you read?
(Check all that apply)

- Action Pursuit Games
- Paintball Sports
- Paintcheck
- Other _____

What is your Team Name & State?

Trademark Notices:
 BUSHMASTER is a trademark of Skirmish, Inc.
 Line SI is a trademark of Skirmish, Inc.
 Copyright © 1989, Skirmish, Inc.
 All Rights Reserved
 No reproduction by any means may be made of this material without written permission of Skirmish, Inc.

“Play It Straight”

with these products from Line SI

ADVANTAGE™ SI

BUSHMASTER™ SI

SKIRMISH™ SI

FIELDMASTER™ SI (U.K.)

POINTMAN™ SI

STINGERS™ — High-performance paintballs

AIRMASTER™ — The SI Power Tube System

All LINE SI brand parts and products

available at your authorized LINE SI dealer.

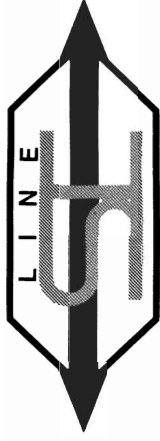
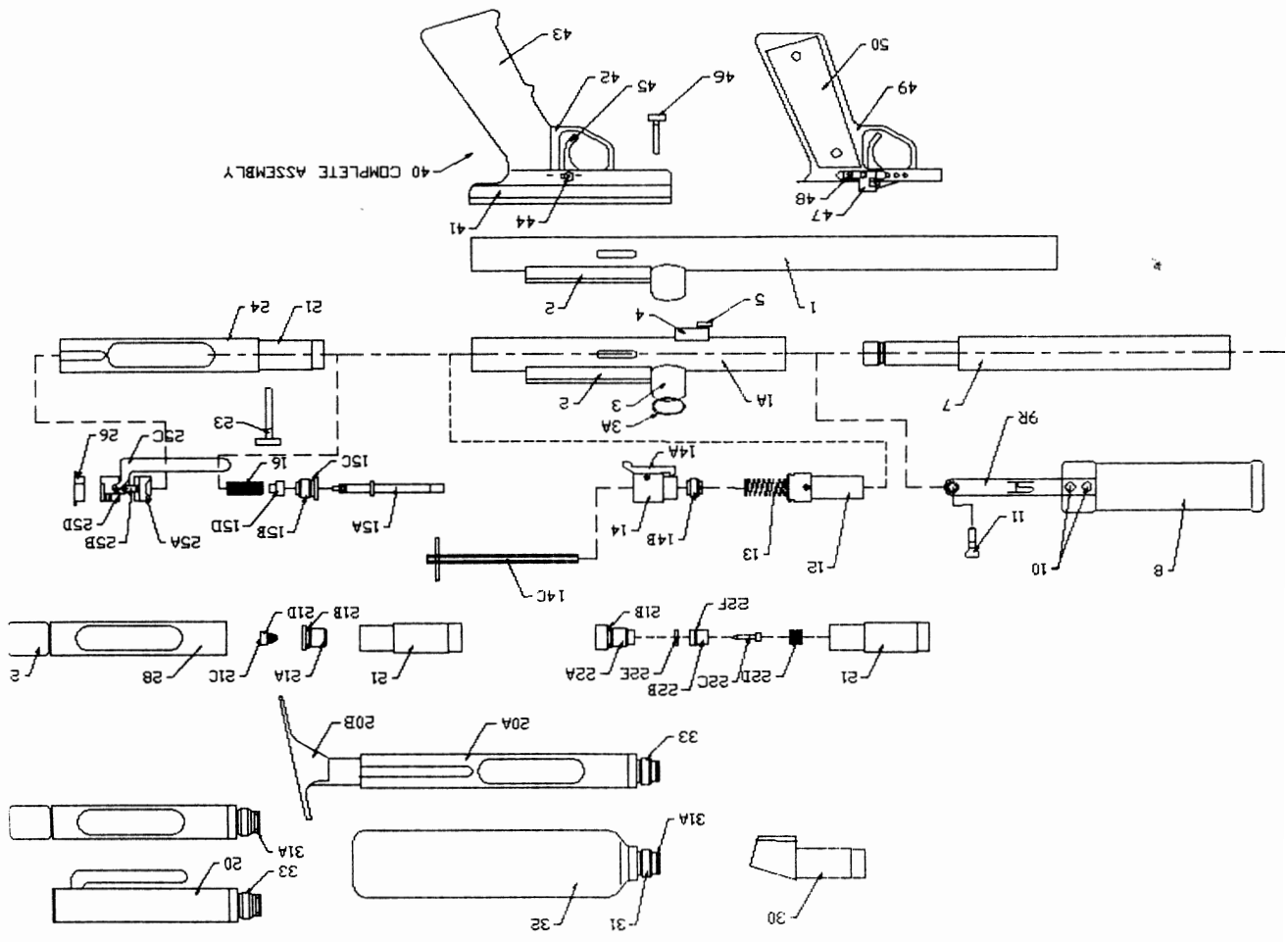


Table of Contents

Introduction.....	1
Main Features and General Description.....	1
Bore-Drop Direct Feed.....	2
Friction Free Bolt and Adjustable Hammer.....	2
BUSHMASTER™ Pump.....	2
Auto Trigger.....	2
Mechanical Safety.....	3
Front Blade Sight and Combination Rear Sight.....	3
“Survival of the Quickest”™ Lever Assembly.....	3
Modifications.....	3
Preparing to Fire.....	4
Loading CO ₂ and Paint.....	4
To Fire Your BUSHMASTER™ SI.....	5
To Remove CO ₂ and Unload Your BUSHMASTER™ SI.....	6
To Remove CO ₂	6
To Unload Your BUSHMASTER™ SI.....	6
Disassembly.....	7
Storage and Transportation.....	8
Performance Tune-Ups.....	8
Hammer Adjustment.....	9
Valve Return Spring Adjustment.....	9
Main Spring Adjustment.....	10
Expanded Diagram.....	12
Warranty.....	Inside Back Cover





PAINTBALL SPORTS SAFETY IT'S YOUR RESPONSIBILITY

Paintball is a unique and new outdoor recreational sport. In order to maintain the good reputation of the game, safety and the proper use of paint marking devices **MUST** be everyone's first consideration.

Read this safety and instructional manual carefully. It is designed to help you learn the safe and proper use and care of your marking pistol and to help you get a better understanding of the sport of Paintball through the proper use of your BUSHMASTER™ SI Paintball gun.

DO NOT USE YOUR BUSHMASTER™ SI WITHOUT FIRST READING AND FULLY UNDERSTANDING THIS MANUAL. If you are not certain about your ability to carry out the instructions in the manual, seek further personalized instruction from the store where you bought your BUSHMASTER™ SI, or from a qualified instructor or airsmith.

If you cannot obtain personalized instruction, contact LINE SI, Public Relations Department, 7117 Canby Avenue, Reseda, CA 91335, (818) 705-6615. We will be glad to assist you.

If you transfer your BUSHMASTER™ SI to another party, please include this **MANUAL**. For a replacement, please contact LINE SI/Skirmish, Inc.

WARNING

FAILURE TO FOLLOW ALL INSTRUCTIONS IN THIS MANUAL VOIDS ALL WARRANTIES, EXPRESS OR IMPLIED.

MAIN FEATURES AND GENERAL DESCRIPTION

The BUSHMASTER™ SI is a quality marking instrument especially designed to meet the needs of professional "master's style" tournament players. Available in both the standard and deluxe models, with a variety of barrel lengths, the BUSHMASTER™ SI is a pump-action, direct fed, BORE-DROP marking device. Major components of the BUSHMASTER™ SI are machined from solid aircraft quality aluminum, thereby providing high tensile strength and resistance to corrosion, in a lightweight package.

Both models have the same basic features and modes of operation.

BUSHMASTER™ SI EXPANDED DIAGRAM

- | | | |
|--|--|--|
| <ul style="list-style-type: none"> 25B. Link (2-Roll Pin) 25C. Lever 25D. Pivot Block (Set Screw) 26. Quickchange End Cap (2-Screws) 28. Twistchange Housing 29. Twistchange Knob 30. Air System Adaptor (ASA) 31. CO₂ Cylinder Bottle Valve 31A. Nylon O'Ring 32. CO₂ Cylinder Bottle 33. Toe Adaptor 40. Complete M-16 Handle Assembly (Complete 45 Handle Assembly Not Shown) 41. Receiver (2 Screws) 42. M-16 Handle & Trigger Housing 43. M-16 Grip (1 Screw) 44. Safety Screw 45. Trigger (1 Dowel Pin, Trigger Spring) 46. Front Receiver Screw 47. Safety (F-Fire Safety On) 48. DB109 Screw 49. 45 Handle Frame 50. 45 Grips (2) | <ul style="list-style-type: none"> 15. Valve Tube Kit 15A. Valve Tube 15B. Valve Seat 15C. Valve Seat O'Ring 15D. Valve Seal 16. Valve Spring 20. Quickchange Complete 21. Valve Body 21A. Piercing Pin Adaptor 21B. Piercing Pin Adaptor O'Ring 21C. Piercing Pin Seal 21D. Piercing Pin 22A. Piercing Pin Housing 22B. Pinsteeve 22C. SI Piercing Pin 22D. Sleeve Spring 22E. Face Seal 22F. Sleeve O'Ring 23. Rear Receiver Screw 24. Quickchange Lever Assembly 25. Quickchange Lever Assembly 25A. Plunger (1-Roll Pin) | <ul style="list-style-type: none"> 1. Barrel Assembly 1A. Deluxe Barrel Housing 2. 1/2" Dovetail rail Mount 3. Direct Feed 3A. Direct Feed O'Ring 4. Pita Block (2 screws) 5. Barrel Retention Screw 6. Valve Body Screws (2) 7. Deluxe Barrel Extension 8. BUSHMASTER™ SI Pump Arm 9R. Engraved SI Pump Arm 9L. Cut out Pump Arm (not shown) 10. Pump Arm Screws (4) 11. Bolt Knob (2) 12. Delrin Bolt 13. Main Spring 14. Adjustable Hammer Assembly 14A. Seal (Seal Spring & Roll Pin) 14B. Adjustment Screw 14C. Adjustment Tool |
|--|--|--|

BORE-DROP DIRECT FEED

Line SI was the manufacturer that created the BORE-DROP DIRECT FEED (part #3) in a paint marking pistol. This feature separates the BUSHMASTER™ SI from all other paintguns currently on the market. The BORE-DROP feature of the BUSHMASTER™ SI allows for more reliable feeding of paintballs with less possibility of ball pinching or cutting by eliminating the feed lip found on breach drop type marking devices.

The elongated Delrin bolt (#12) serves as an expansion chamber, allowing the CO₂ propellant to form a cushion of gas behind each paintball resulting in more consistent velocity and accuracy.

FRICTION FREE BOLT AND ADJUSTABLE HAMMER

Every BUSHMASTER™ SI comes equipped with an interlocking friction free bolt and hammer. The hammer (#14) has an elongated section that locks into a special recess of the bolt. This results in an extremely smooth pumping action, especially during the closing stroke of the pump.

The hammer of every BUSHMASTER™ SI has a built-in adjustable velocity regulator especially designed to allow you to easily change your velocity. An adjustment piece (#14B) is screwed into the threaded body of the hammer. Using the adjustment tool (#14C), turn in a clockwise direction to increase velocity or counter-clockwise to decrease velocity. The range of adjustment is approximately 40 feet per second. YOU MUST ALWAYS CHRONOGRAPH YOUR GUN AFTER USING THE VELOCITY ADJUSTER.

BUSHMASTER™ PUMP

The twin action bars of the BUSHMASTER™ SI pump (#8) provide for a smooth positive lock-up between the bolt and the hammer. The internal surfaces of the pump body have been designed to glide over the external surfaces of the barrel assembly with minimal marring to the finish of your marking pistol.

AUTO-TRIGGER

Every BUSHMASTER™ SI comes complete with a built in Auto-Trigger. This feature allows you to shoot as fast as you can pump. Simply hold down the trigger (#45) and pump. Your BUSHMASTER™ SI will fire upon completion of the pump-cycling action. The Auto-Trigger allows you to fire 3 to 4 rounds bursts in about a second.

reverse order. ALWAYS chronograph after making any adjustments to your BUSHMASTER™ SI.

IMPORTANT WARNING

After making any performance changes to your BUSHMASTER™ SI be sure to check the velocity of your gun by having it CHRONOGRAPHED by a competent airgunsmith. Do not rely upon such false methods as listening to the report of the gun or "watching how hard it hits". The only way to be sure that your BUSHMASTER™ SI is shooting at safe velocities is to have it properly chronographed.

ALWAYS WEAR APPROVED GOGGLES AND EAR PROTECTION WHENEVER USING YOUR PAINTGUN.

STATEMENT OF LIABILITY

This airgun is delivered by us with the express understanding that we assume no liability for its resale or safe handling. It can be considered as a dangerous weapon if mishandled, abused, instructions are ignored, or factory adjustment tampered with. Line SI and Skirmish Inc. assume no responsibility for the physical injury or property damage resulting from its use.

BUSHMASTER™ SI, following the directions in the *To Unload Your BUSHMASTER™ SI* section of the MANUAL.

2. Remove the rear receiver screw from the valve body. This will free the valve body from the lower receiver.
3. Remove the Quickchange/Twistchange/ASA from the barrel assembly.
4. **WARNING:** Before continuing with the next step, be certain that you have removed the CO₂. You will be removing the valve system that normally retains the CO₂. Using a 3/4 inch open end wrench, loosen the valve seat (#15B) from the valve body. At this time, inspect the valve seat "O" ring (#15C). If it has expanded beyond its normal size, place in the freezer until it contracts or replace the "O" ring with a new one.
5. Remove the valve return spring (#16). If you wish to decrease the velocity of your BUSHMASTER™ SI, install a longer or stronger return spring. If you wish to increase the velocity of your BUSHMASTER™ SI, install a shorter or weaker valve return spring.

6. Reassemble your BUSHMASTER™ SI by following the steps in reverse. **ALWAYS** chronograph after making any adjustments to your BUSHMASTER™ SI.

MAIN SPRING ADJUSTMENT

1. Put your BUSHMASTER™ SI in the "SAFE" mode by sliding the SAFETY to the "S" position. Remove all CO₂ and paint from your BUSHMASTER™ SI, following the directions in the *To Unload Your BUSHMASTER™ SI* section of the MANUAL.
2. Remove the front and rear receiver screws. You can now separate the barrel assembly and Quickchange/Twistchange/ASA from the lower receiver.
3. Remove the Quickchange/Twistchange/ASA from the barrel assembly.
4. With the Quickchange/Twistchange/ASA removed from the barrel assembly, insert adjustment tool (#14C) into the hammer and fit it into hex of the ADJUSTMENT SCREW (#14B).
5. The ADJUSTMENT SCREW can now be turned clockwise to raise velocity (tensioning the MAIN SPRING) or counter-clockwise to decrease the velocity.
6. Reassemble your BUSHMASTER™ SI by following these steps in

The Auto-Trigger is a standard feature on both the M-16 Grip that comes with your BUSHMASTER™ SI and the .45 Grip that is an available option.

MECHANICAL SAFETY

The BUSHMASTER™ SI has a mechanical safety (#47) which prevents the trigger from traveling its full range, so that contact with the sear (#14A) is blocked. **ALWAYS KEEP YOUR BUSHMASTER™ SI POINTED IN A SAFE DIRECTION. NEVER depend entirely upon your SAFETY, because like all mechanical devices, YOU MAY FORGET TO PROPERLY SET IT.** Proper gun handling is the best SAFETY device.

The SAFETY can be applied whether or not your BUSHMASTER™ SI is cocked. Sliding the SAFETY button to the forward position marked "S" puts your BUSHMASTER™ SI in the "Safe" mode. Moving the SAFETY button to the rear position marked "F" puts your gun in the "FIRE" mode. Always keep your BUSHMASTER™ SI in the "S" mode until you are ready to fire. Never point your BUSHMASTER™ SI at anything you don't intend to shoot.

FRONT BLADE SIGHT AND COMBINATION REAR SIGHT

Standard on the BUSHMASTER™ SI is an integral blade front sight on the pump and a combination V-notch/dovetail rail mount rear sight (#2). These sights are rugged and durable and have been pre-set at the factory for a point of impact at optimal combat range. Especially suited for rapid target acquisition of moving objects, these sights are equally adept for sniping at stationary targets. Should you choose to upgrade your sighting target system to electronic or optical sights, the 1/2 inch dovetail readily accepts mounts and rings available for .22 manual rifles.

"SURVIVAL OF THE QUICKEST"™ LEVER ASSEMBLY

This is the quickest single cartridge quickchange on the market. Machined from aircraft quality aluminum, this lever action quickchange revolutionized tournament play across the country. The Line SI Quickchange (#20) provides for the positive release of spent CO₂ cartridges while at the same time allowing quick and efficient reloading of a fresh one. When you follow the proper technique for a speed-reload, your BUSHMASTER™ SI is ready for immediate action.

MODIFICATIONS

Your BUSHMASTER™ SI is a Tournament quality marking device. It has been used successfully to win prize money in all of the major tournaments held in North America. Modifications are not needed.

PREPARING TO FIRE

READ THE ENTIRE MANUAL BEFORE you prepare your gun for firing. Safety and safe gun handling are the most important aspects of paintball sports. Please practice each of the following steps with an UNLOADED gun before attempting to charge your gun with CO₂ and paint pellets. Do not load CO₂ and paintballs into your BUSHMASTER™ SI until you feel completely confident with your ability to handle your BUSHMASTER™ SI.

LOADING CO₂ AND PAINT

1. Keeping your finger out of the trigger guard (#42) and away from the trigger (#45), point the muzzle of your gun in a safe direction. Keep your BUSHMASTER™ SI pointed in a safe direction during this entire process.

2. Move the SAFETY (#47) fully forward to the “S” or SAFE position. This will prevent the trigger from traveling its full range so that contact with the sear (#14A) is blocked. NEVER depend entirely upon a safety. YOU MAY FORGET TO PROPERLY SET IT. ALWAYS KEEP YOUR BUSHMASTER™ SI POINTED IN A SAFE DIRECTION.

3. To insert CO₂: See A,B or C

A-Quickchange (#20)

A1. With an EMPTY Quickchange, open the Quickchange chamber by moving the lever arm (#25C) completely to the rear. Insert a fresh 12 gram CO₂ cartridge into the Quickchange chamber by placing the ROUNDED end of the CO₂ cartridge in first. The rounded portion of the cartridge should be at the back of the chamber against the plunger (#25A) with the tapered end at the front of the chamber.

A2. With the CO₂ in proper position, firmly push the lever arms to its closed position. The lever arm should be parallel to the Quickchange body and locked in place.

B -Twistchange

B1. With an EMPTY Twistchange (#28), open the chamber by unscrewing the Twistchange knob (#29). Insert a fresh CO₂ into the Twistchange chamber by placing the ROUNDED end of the CO₂ cartridge in first. The rounded portion of the cartridge should be at the back of the chamber (the end with the knob).

B2. Slowly twist the Twistchange knob clockwise so that it fits against the CO₂ and pushes the cartridge top against the

ALWAYS chronograph after making any adjustments to your BUSHMASTER™ SI.

The performance of your BUSHMASTER™ SI can be changed in several ways. By changing the pressure of either your MAIN SPRING (#13), located in the barrel assembly or by changing the pressure of the VALVE RETURN SPRING (#16) located in the valve body housing of your Quickchange/Twistchange/ASA assembly, you can tune-in your BUSHMASTER™ SI to shoot at SAFE and LEGAL velocities.

The pressure of the main spring can be easily adjusted by using the adjustable velocity regulator built into every BUSHMASTER™ SI hammer. The range of adjustment is approximately 40 feet per second. If you wish to raise or lower the velocity of your BUSHMASTER™ SI within this range, it is a fairly simple matter by using the adjustable velocity regulator.

HAMMER ADJUSTMENT

1. Put your BUSHMASTER™ SI in the “SAFE” mode by sliding the SAFETY to the “S” position. Remove all CO₂ and paint from your BUSHMASTER™ SI, following directions in the *To Unload Your BUSHMASTER™ SI* section of the MANUAL.

2. Remove the rear receiver screw. You can now separate the barrel assembly and Quickchange/Twistchange/ASA from the lower receiver.

3. Remove the Quickchange/Twistchange/ASA from the barrel assembly.

4. With the Quickchange/Twistchange/ASA removed from the barrel assembly, insert adjustment tool (#14C) into the hammer and fit it into the hex of the adjustment screw (#14B).

5. The adjustment screw can now be turned clockwise to raise velocity (tensioning the main spring) or counter-clockwise to decrease the velocity.

6. Reassemble your BUSHMASTER™ SI by following these steps in reverse order. **ALWAYS** chronograph after making any adjustments to your BUSHMASTER™ SI.

VALVE RETURN SPRING ADJUSTMENT

1. Put your BUSHMASTER™ SI in the “Safe” mode by sliding the SAFETY to the “S” position. Remove all CO₂ and paint from your

2. Remove the front and rear receiver screws. You can now separate the barrel assembly and Quickchange/Twistchange/ASA from the lower receiver.
3. Remove the Quickchange/Twistchange/ASA from the barrel assembly.
4. With the Quickchange/Twistchange/ASA removed from the barrel assembly, the hammer and main spring are free to be removed.
5. Unscrew the bolt knobs from the pump arms. The bolt is now free to drop from the barrel assembly.

Now that the BUSHMASTER™ SI is field stripped into its major components, cleaning and lubrication can be easily accomplished. A clean rag dampened with isopropyl alcohol will remove all paint residue from the external surfaces of your BUSHMASTER™ SI and from the bolt and hammer. You may wish to spray alcohol into the barrel and clean it with a squeegee and foam swab.

Lightly oil the hammer and metal portion of the bolt. Do not oil the Delrin portion of the bolt or allow oil to seep into the barrel. Use a light gun oil. Remember that oil acts as a collector for dust and dirt, so do not over lubricate.

STORAGE AND TRANSPORTATION

Your BUSHMASTER™ SI must be clear of all paint and CO₂ when not being used. Follow the instructions on how to UNLOAD and REMOVE CO₂. Keep the SAFETY in the "S" or SAFE mode. Store your BUSHMASTER™ SI away from excessive heat in a clean dry place. Keep your BUSHMASTER™ SI away from the reach of children. **THIS IS NOT A TOY! TO BE USED BY ADULTS ONLY.**

Your BUSHMASTER™ SI must be clear of all paint and CO₂ during its transportation to and from the playing field. Keep the SAFETY in the "S" or SAFE mode. Protect your BUSHMASTER™ SI from excessive heat during transportation.

PERFORMANCE TUNE-UPS

Your BUSHMASTER™ SI has been pre-set at the factory to shoot at approximately 280 feet per second (180 feet per second in the United Kingdom). However, because of the various factors that affect paintgun performance, your BUSHMASTER™ SI may have to be adjusted to meet velocity standards in your area. **NEVER** guess at your gun's velocity.

piercing pin (#21C), puncturing the top of the cartridge.

B3. Continue to twist until properly sealing the cartridge.

C-3 1/2, 7 or 10 oz. Constant Air Cylinder

DO NOT ATTEMPT THIS UNTIL YOU HAVE READ THE ENTIRE MANUAL AND UNDERSTAND THE UNLOADING PROCEDURE.

C1. Take the cylinder (#32) and thread valve (#31) into the SI Air System Adaptor (#30).

C2. Continue to twist until the valve seals properly.

4. Load paint pellets by inserting a tube of pellets into the paint magazine. Paint pellets are gravity fed into the BORE-DROP of the BUSHMASTER™ SI through the direct feed (#3).

5. Holding pistol grip with strong hand, grasp pump with weak hand. Pull pump completely rearward. This action does two things. It cocks the hammer and bolt and at the same time it opens the bore, allowing a paint pellet to drop into the bore.

6. Now, push the pump completely forward. This action does two things. It pushes a paint pellet into the bore and places the hammer and bolt into firing position. **YOUR BUSHMASTER™ SI IS NOW READY TO FIRE. REMEMBER TO KEEP THE MUZZLE OF YOUR BUSHMASTER™ SI POINTED IN A SAFE DIRECTION. KEEP YOUR FINGER OUT OF THE TRIGGER GUARD AND AWAY FROM THE TRIGGER.**

TO FIRE YOUR BUSHMASTER™ SI

1. With the SAFETY in the "S" position and the muzzle pointing in a safe direction, grasp your BUSHMASTER™ SI with your stronger hand on the pistol grip and your weaker hand on the pump.

2. Face your target and without touching the trigger, move the safety to the "F" or FIRE position. Align the sights properly, and squeeze the trigger.

3. If a subsequent shot is NOT to be made, IMMEDIATELY move the SAFETY to the "S" or SAFE position. To make subsequent shots, repeat the above procedure.

TO REMOVE CO₂ AND UNLOAD YOUR BUSHMASTER™ SI

TO REMOVE CO₂

1. With the SAFETY in the "S" or SAFE position and the muzzle pointing in a safe direction, grasp the pistol grip with your weak hand, remembering to keep your fingers out of the trigger guard and away from the trigger.

2A. For the Quickchange Assembly:

Grasp the Quickchange lever securely and SLOWLY pull back on the Quickchange lever. STOP when you can hear gas escaping from the CO₂ cartridge. **WARNING:** A pressurized CO₂ cartridge can fly out of Quickchange. Wait for all remaining gas to escape before opening lever completely. When the CO₂ cartridge is empty of all remaining gas, pull the lever fully to the rear. You may now remove the empty cartridge and insert a new one, follow the directions in *Loading CO₂ and Paint* described above.

2B. For the Twistchange Assembly:

SLOWLY twist the Twistchange knob in a counter-clockwise direction. Stop when you hear gas escaping from the CO₂ cartridge.

WARNING: Pressurized CO₂ cartridge can fly out of Twistchange. Wait for all remaining gas to escape before opening Twist knob. You may now remove the empty cartridge and insert a new one, following the directions in *Loading CO₂ and Paint* described above.

2C. For the 3 1/2, 7 and 10 oz. cylinders SLOWLY unscrew cylinder. Stop when you hear gas escaping from the Air System Adaptor.

WARNING: Pressurized CO₂ can cause cylinder to fly off of Air System Adaptor. Wait until hissing (escaping gas) has stopped. You may now remove the empty cylinder. To insert a new one, follow the directions in *Loading CO₂ and Paint* described previously.

TO UNLOAD YOUR BUSHMASTER™ SI

1. With the SAFETY (#44) in the "S" or SAFE position and the muzzle pointing in a safe direction, grasp the pistol grip with your weak hand, remembering to keep your fingers out of the trigger guard and away from the trigger.

2. With your other hand, remove the paint magazine from your BUSHMASTER™ SI making sure that all paint pellets have been removed.

3. Grasp and pull pump completely rearward, opening the action of the gun so that the BORE-DROP can be visually inspected for remaining paint pellets. When inspecting BORE-DROP for paint pellets, KEEP YOUR GUN POINTED IN A SAFE DIRECTION. PAINT PELLETS MAY STILL REMAIN IN THE BORE AND CAN STILL BE FIRED!

4. Remember to keep the muzzle of your paintgun pointed in a safe direction. Facing a proper target and without touching the trigger, move the safety to the "F" or FIRE position. Align the sights properly and squeeze the trigger to fire your gun.

5. REPEAT THIS PROCEDURE UNTIL YOU ARE CERTAIN THERE ARE NO PAINT PELLETS PRESENT IN YOUR BUSHMASTER™ SI. THIS IS EXTREMELY IMPORTANT!

DISASSEMBLY

CAUTION: Before attempting to disassemble your BUSHMASTER™ SI make sure that all paint pellets and sources of CO₂ have been removed from your gun. Place the SAFETY on "S" and keep it in the SAFE mode.

The BUSHMASTER™ SI can be completely field stripped into its major components WITHOUT the use of tools. Every BUSHMASTER™ SI comes equipped with LINE SI's FIELD STRIP SCREW KIT. Field stripping requires the removal of only two screws, a rear receiver screw and a front receiver screw.

The FRONT RECEIVER SCREW (#46) is located on the UNDERSIDE of the BARREL in front of the trigger guard. This screw secures the front portion of the barrel assembly to the front portion of the lower receiver.

The REAR RECEIVER SCREW (#23) is located on the UPPER SIDE of the VALVE BODY (#21). The valve body inserts into the rear of the barrel assembly (#1 or 1A). The rear receiver screw secures the valve body and the barrel assembly to the lower receiver (#41).

CAUTION: Before attempting to disassemble your BUSHMASTER™ SI make sure that all paint pellets and sources of CO₂ have been removed from your gun. Place the SAFETY on "S" and keep it in the SAFE mode.

The procedure for disassembly is as follows:

1. While keeping your gun pointed in a safe direction, remove all paint and CO₂. Place the SAFETY on "S" and keep it in the SAFE mode.